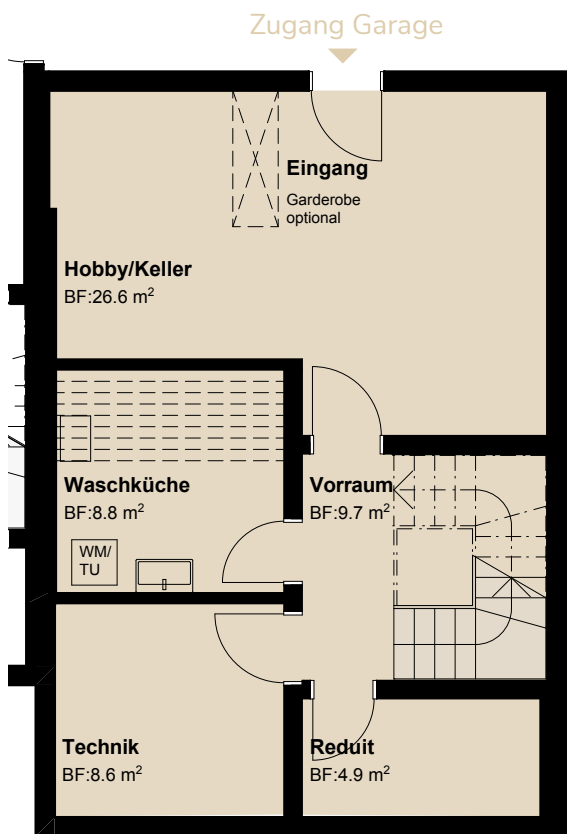


Haus 2



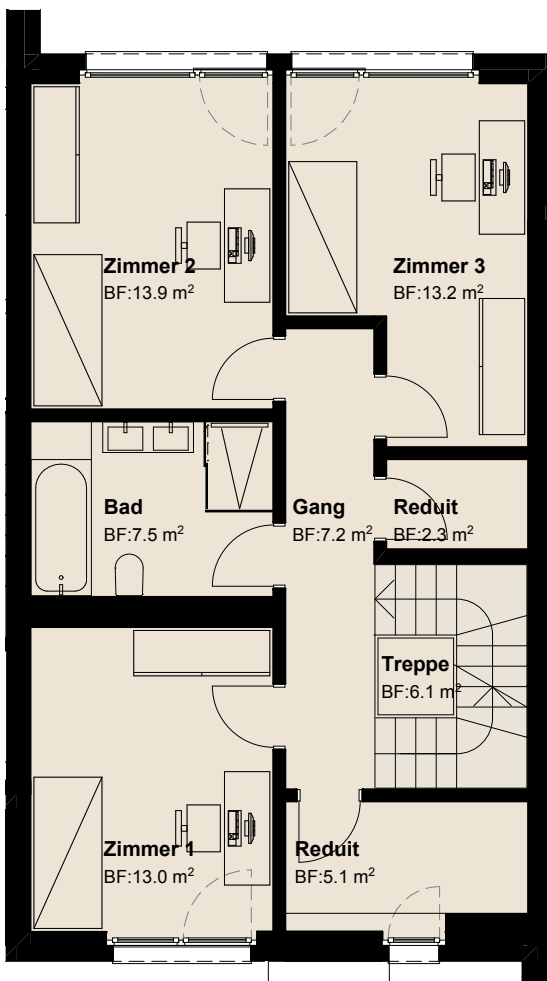
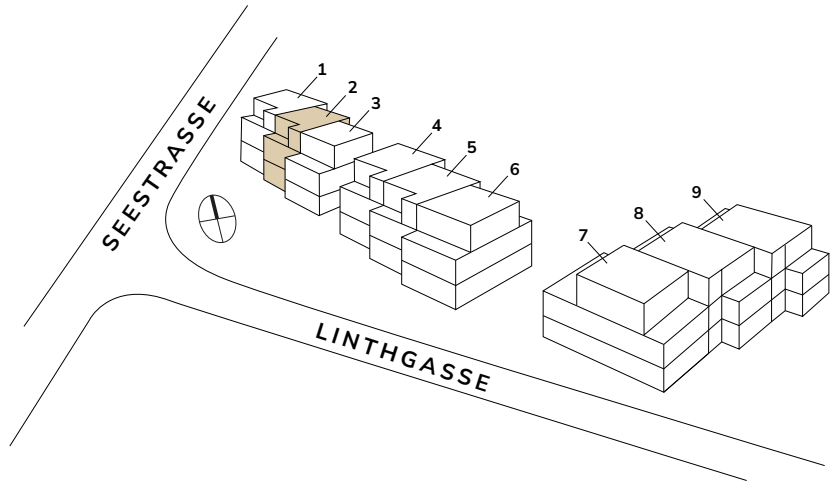
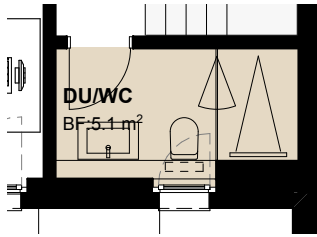
Untergeschoss



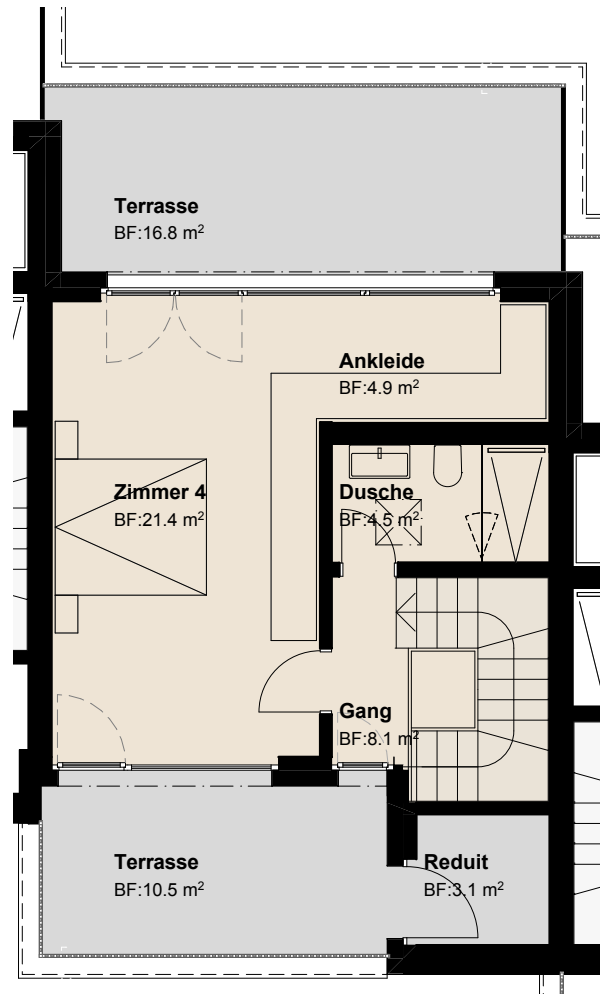
Erdgeschoss

Zimmer	5.5
Bruttowohnfläche	181 m ²
Total Nutzfläche	233 m ²
Landanteil	188 m ²
Sitzplätze / Terrassen	56 m ²

Ausbau Variante OG



Obergeschoss



Attikageschoss



Mst. 1:100

0

1 m

5 m

