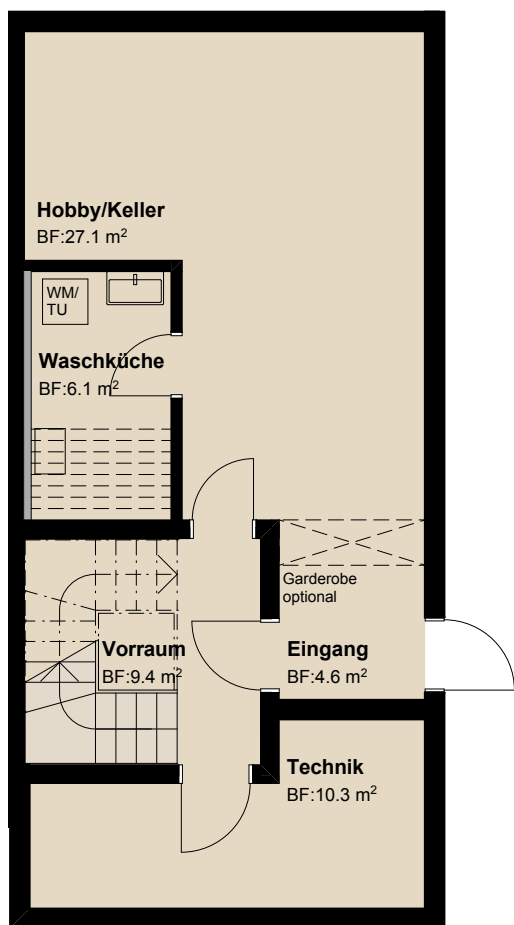
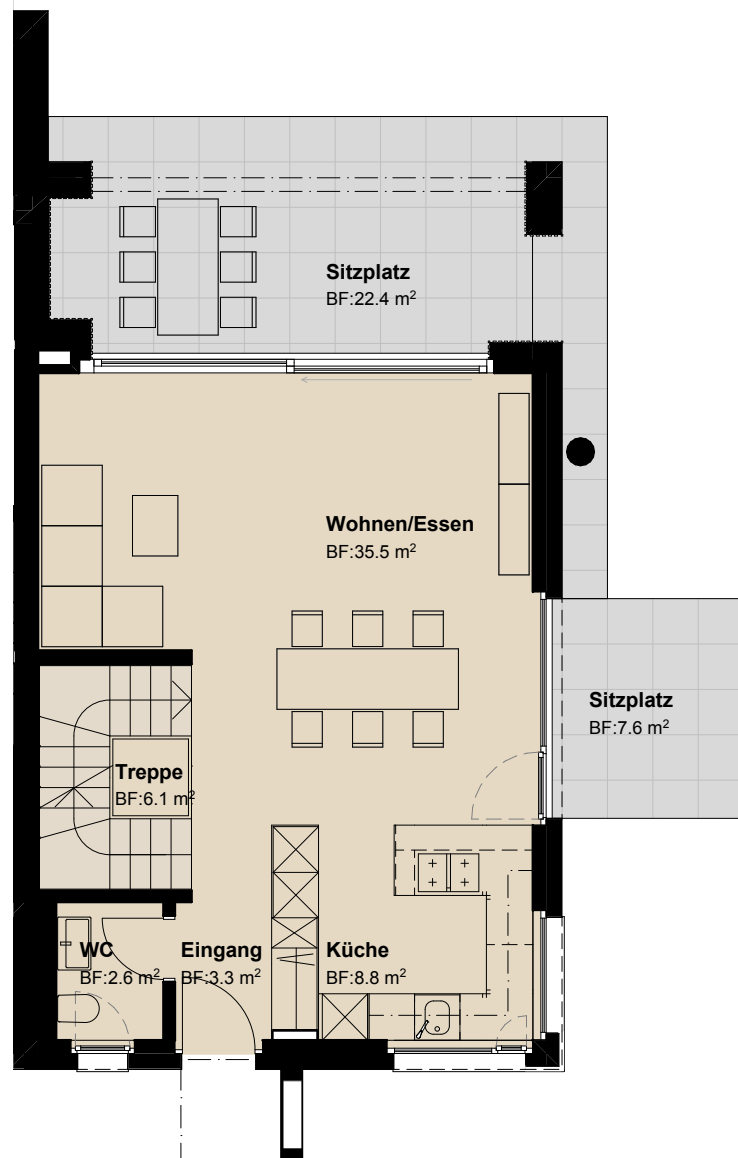


# Haus 3



Untergeschoss

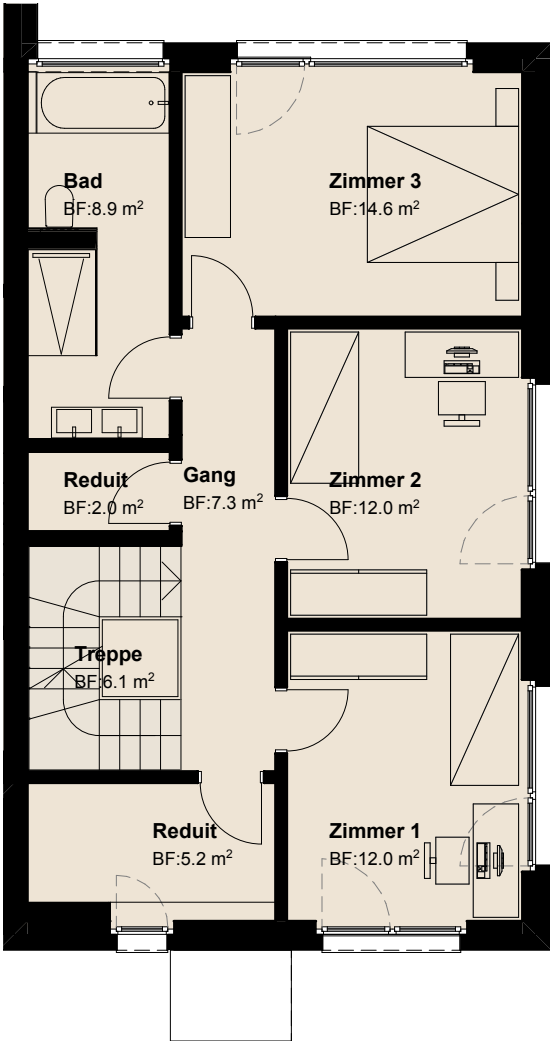
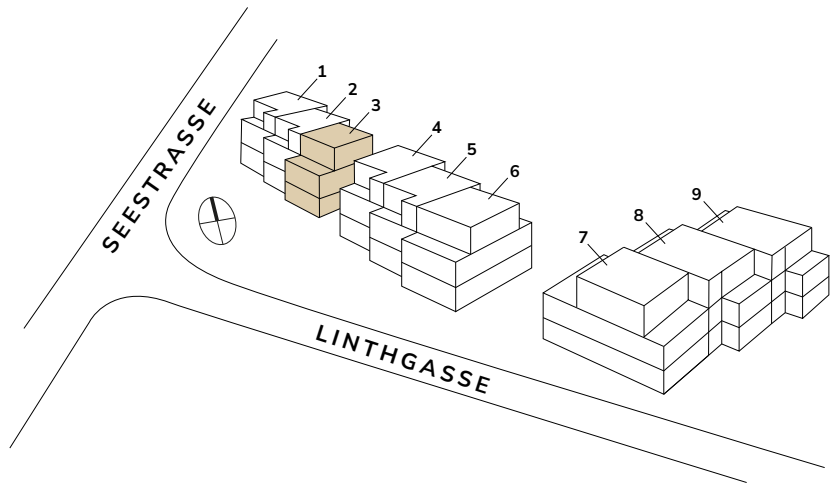
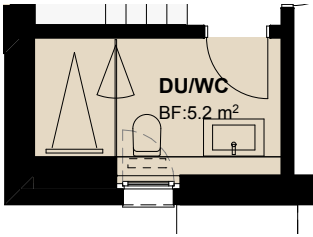
Zugang Garage



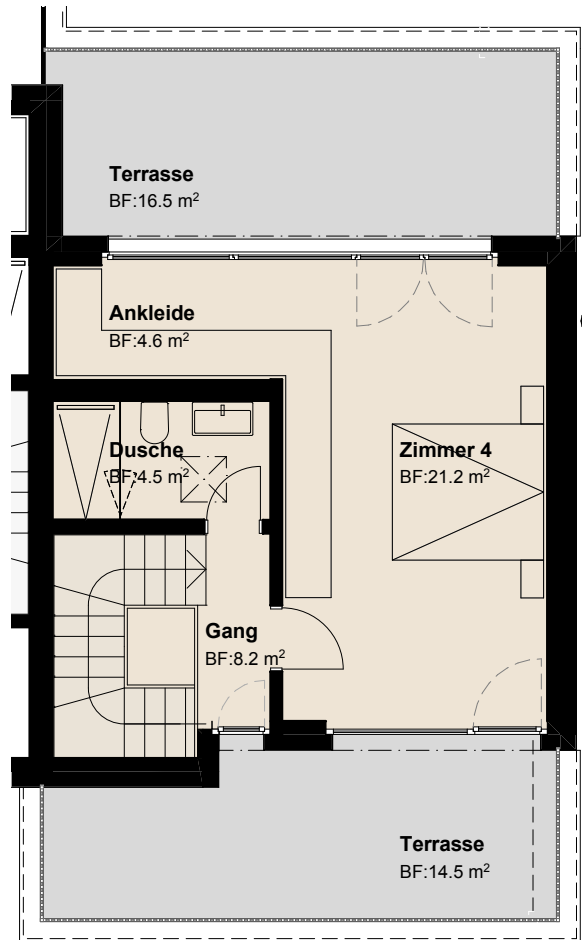
Erdgeschoss

Zimmer	<b>5.5</b>
Bruttowohnfläche	<b>180 m<sup>2</sup></b>
Total Nutzfläche	<b>228 m<sup>2</sup></b>
Landanteil	<b>282 m<sup>2</sup></b>
Sitzplätze / Terrassen	<b>61 m<sup>2</sup></b>

# Ausbau Variante OG



Obergeschoss



Attikageschoss



Mst. 1:100    0    1 m    5 m

