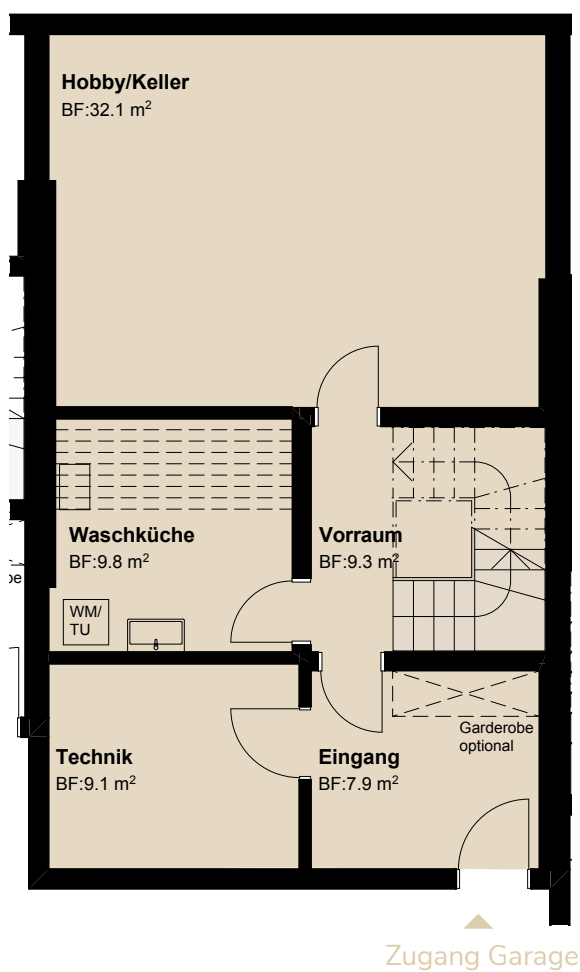
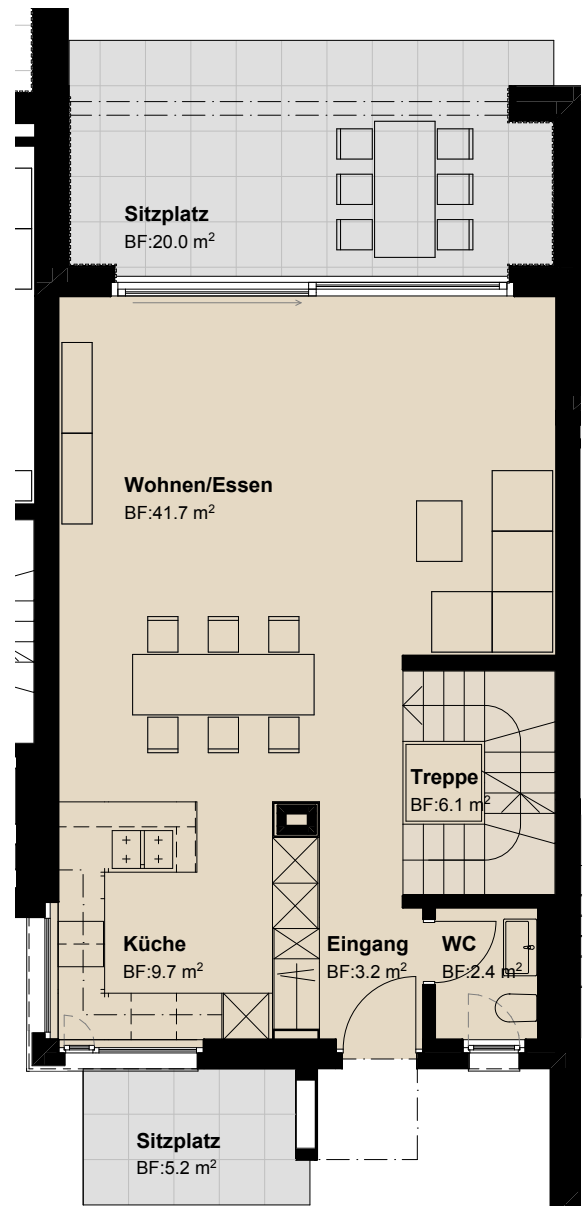


# Haus 5



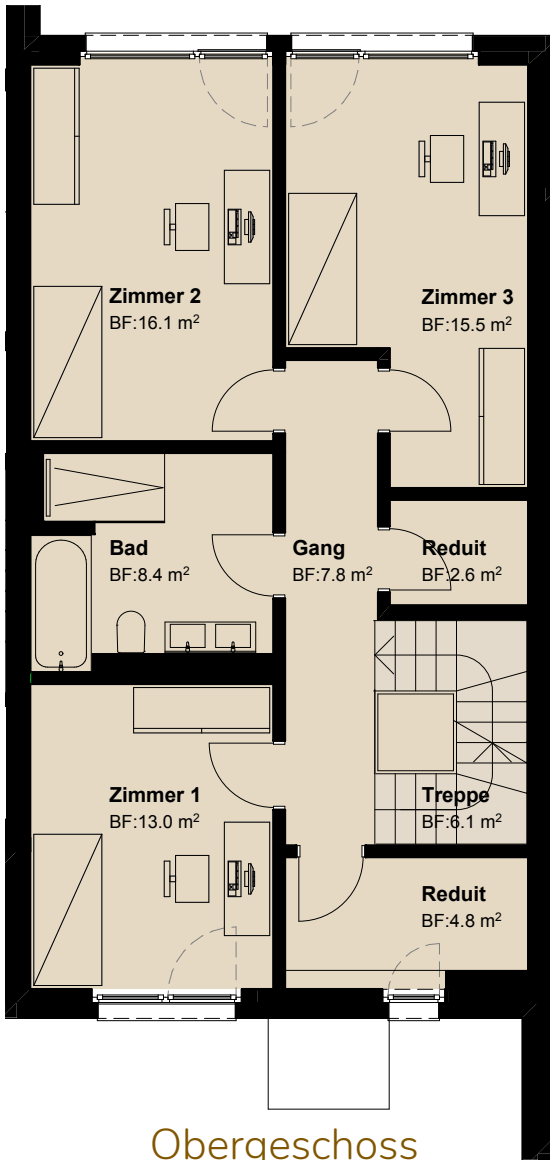
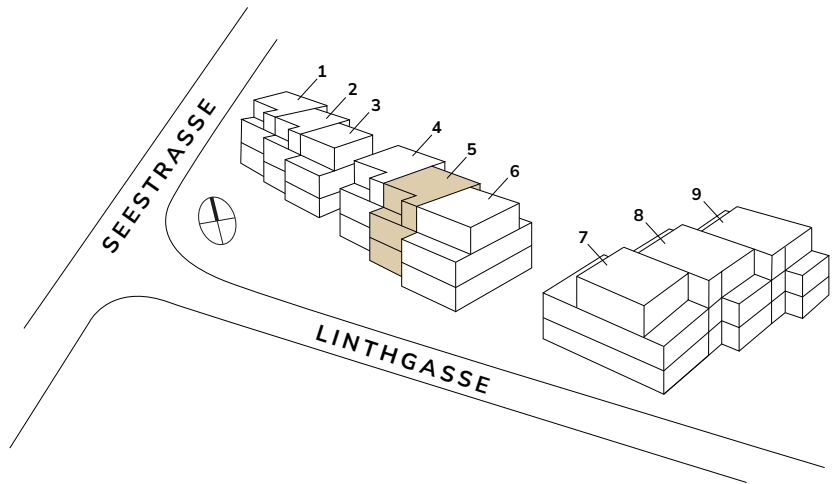
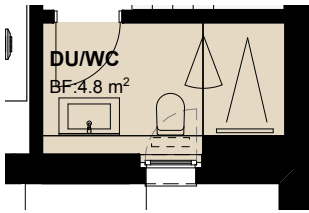
Untergeschoss



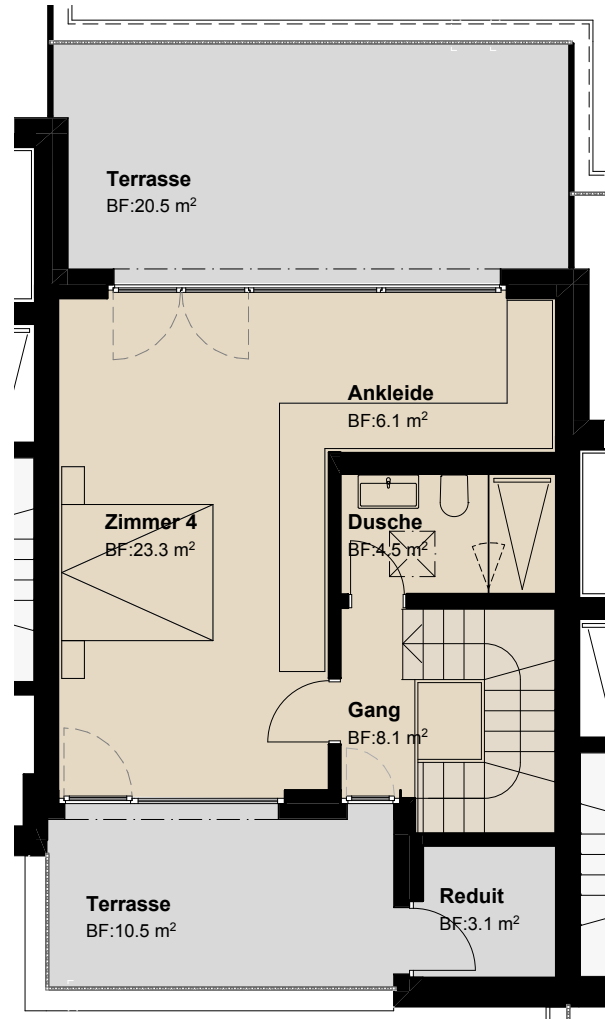
Erdgeschoss

Zimmer	<b>5.5</b>
Bruttowohnfläche	<b>197 m<sup>2</sup></b>
Total Nutzfläche	<b>259 m<sup>2</sup></b>
Landanteil	<b>183 m<sup>2</sup></b>
Sitzplätze / Terrassen	<b>56 m<sup>2</sup></b>

# Ausbau Variante OG



Obergeschoss



Attikageschoss



Mst. 1:100

0

1 m

5 m

