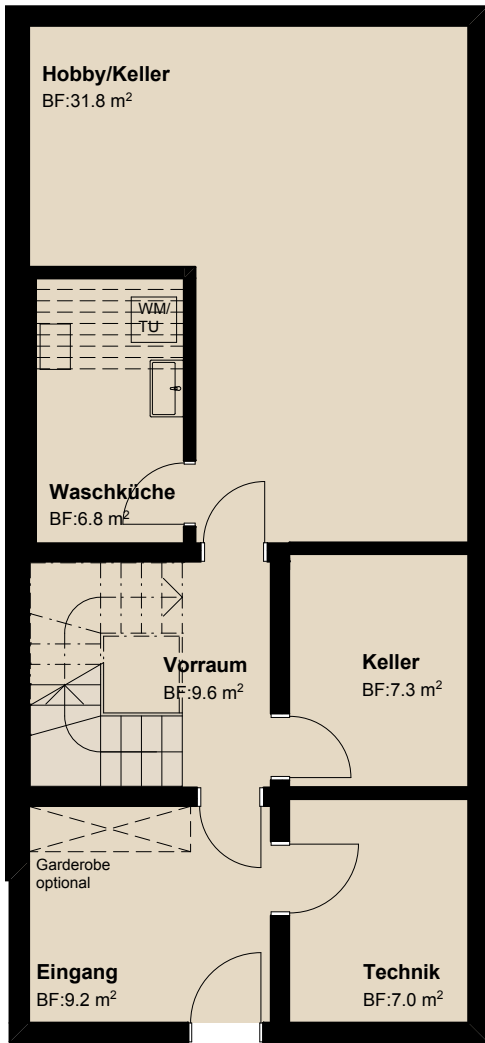
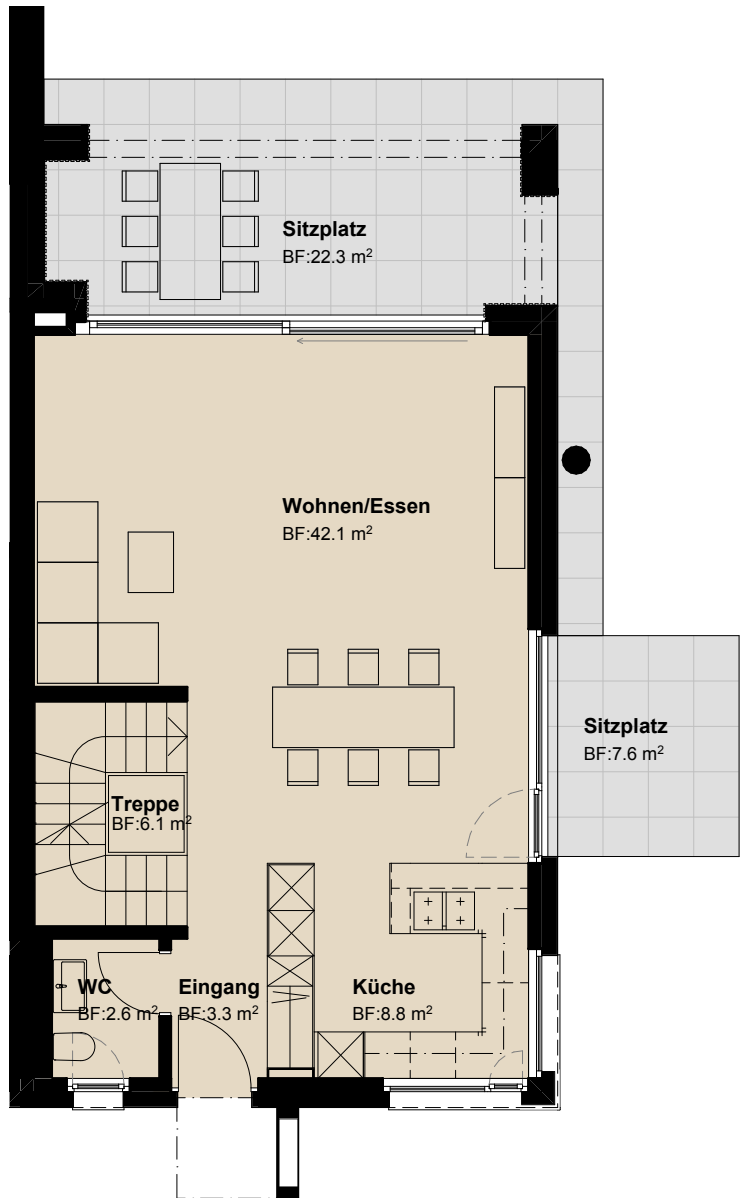


# Haus 6



Zugang Garage

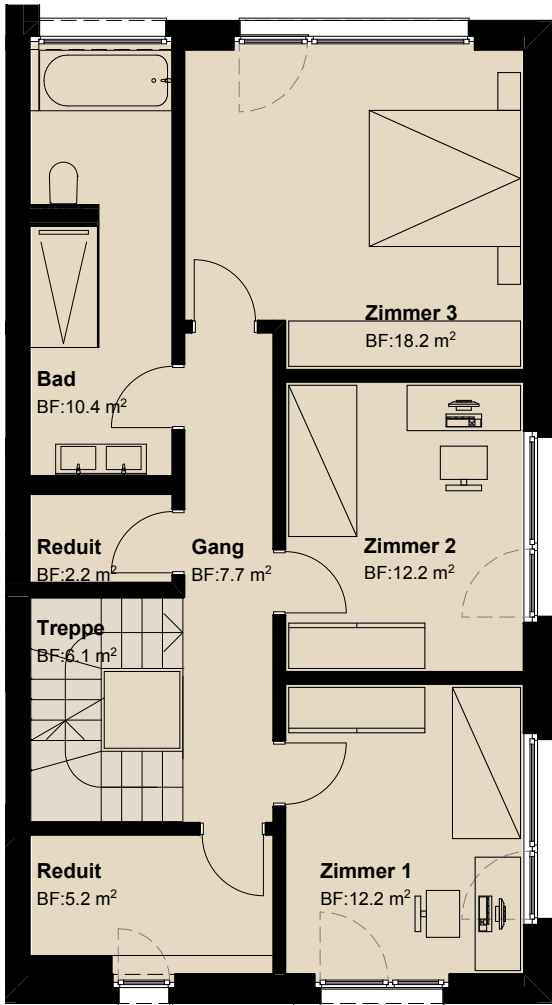
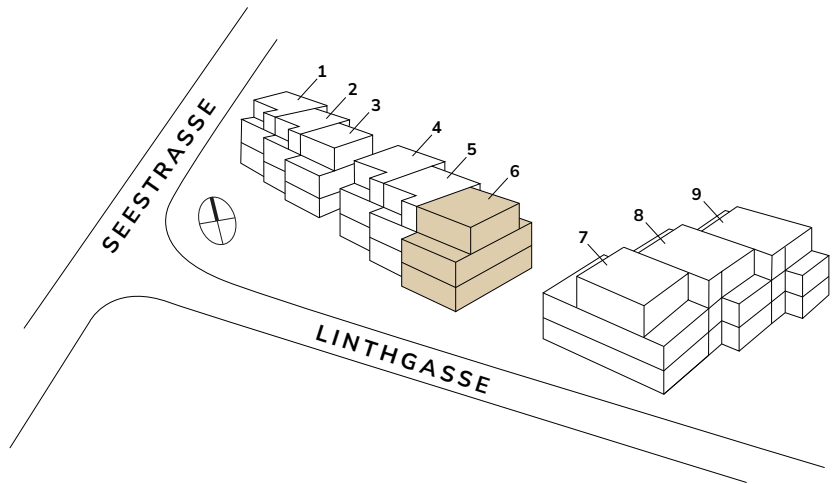
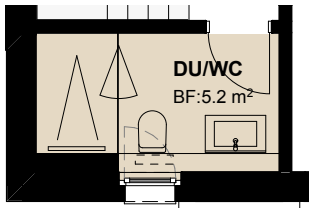
Untergeschoss



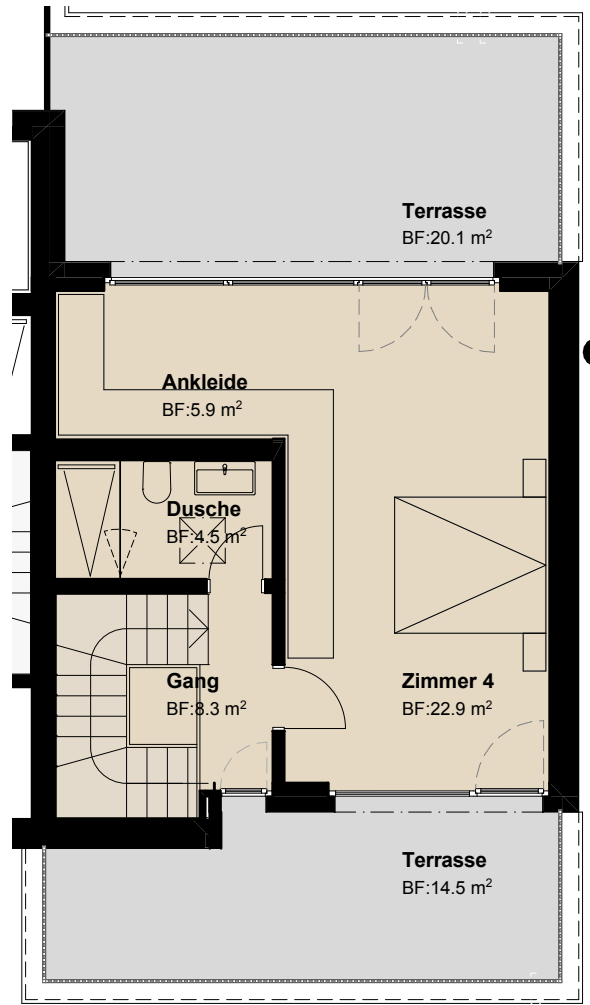
Erdgeschoss

Zimmer	5.5
Bruttowohnfläche	197 m <sup>2</sup>
Total Nutzfläche	259 m <sup>2</sup>
Landanteil	334 m <sup>2</sup>
Sitzplätze / Terrassen	65 m <sup>2</sup>

# Ausbau Variante OG



Obergeschoss



Attikageschoss



Mst. 1:100

