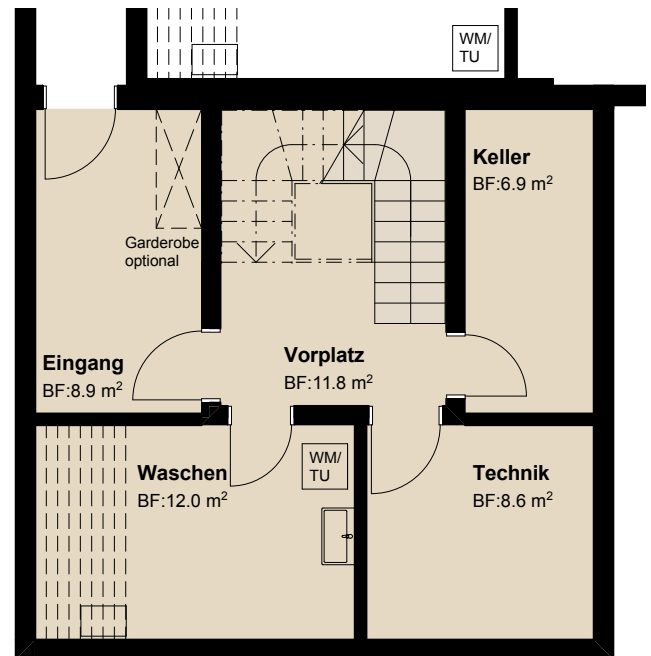


Haus 7

Untergeschoss

Zugang Garage

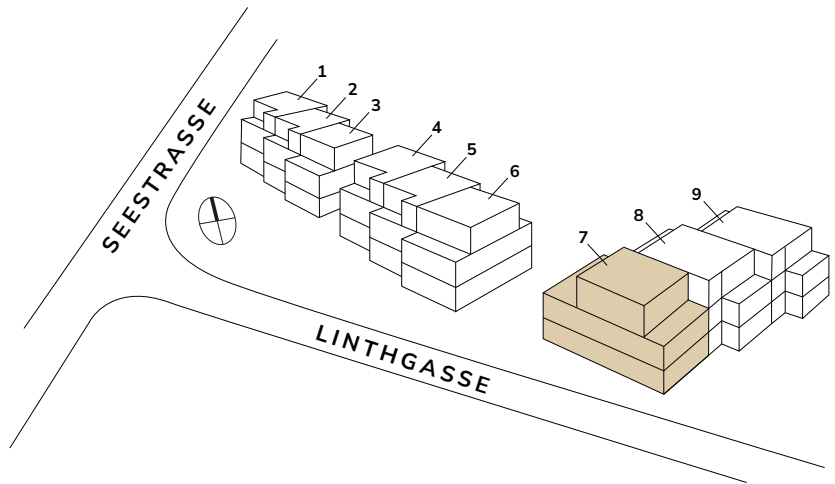
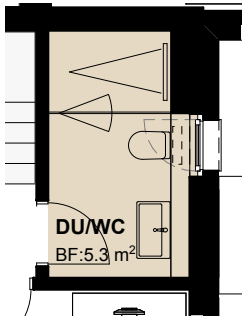


Erdgeschoss

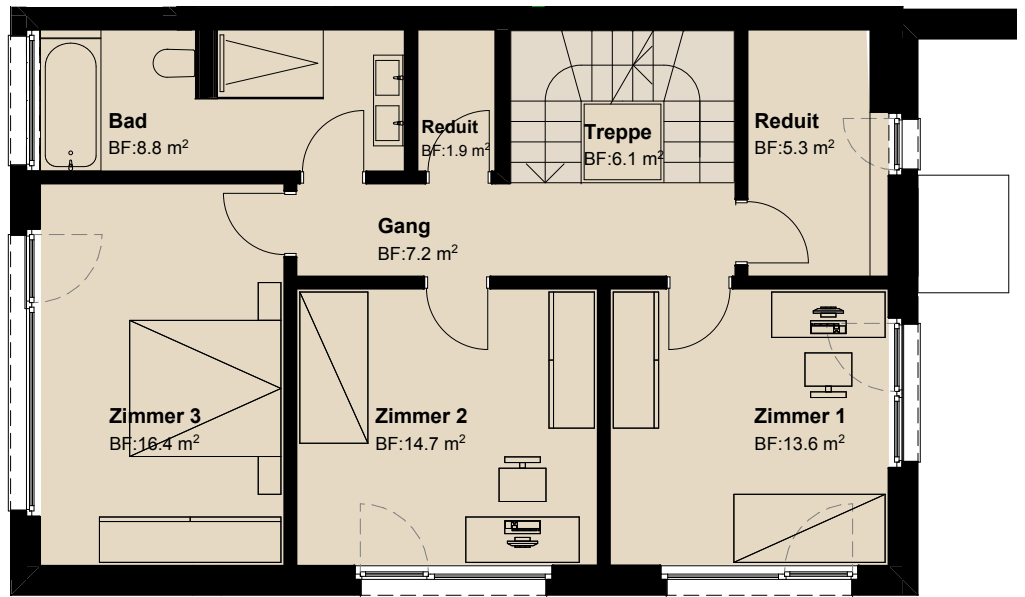


Zimmer	5.5
Bruttowohnfläche	197 m ²
Total Nutzfläche	236 m ²
Landanteil	266 m ²
Sitzplätze / Terrassen	62 m ²

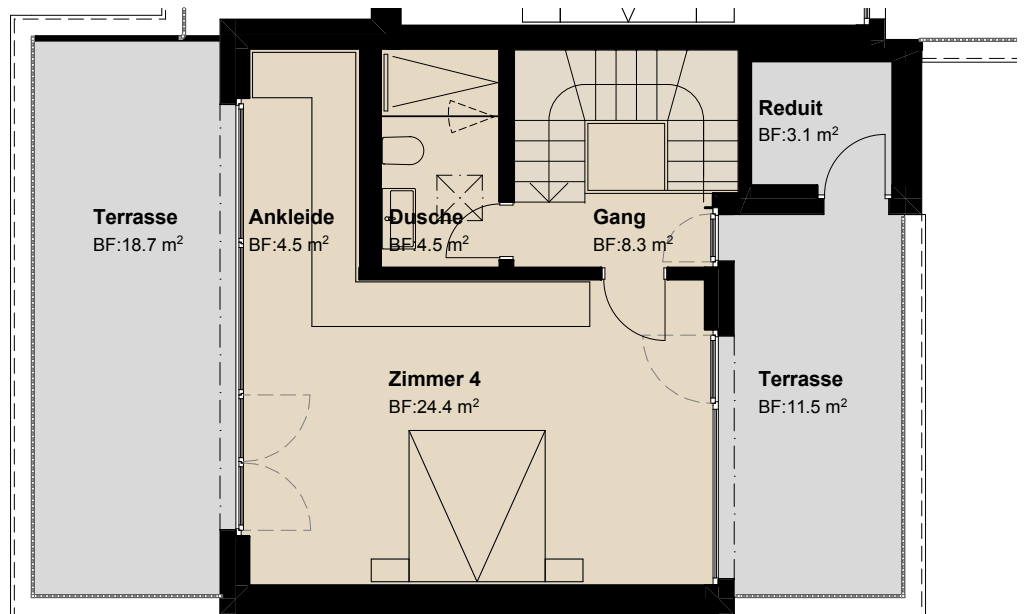
Ausbau Variante OG



Obergeschoss



Attikageschoss



Mst. 1:100

0

1 m

5 m

