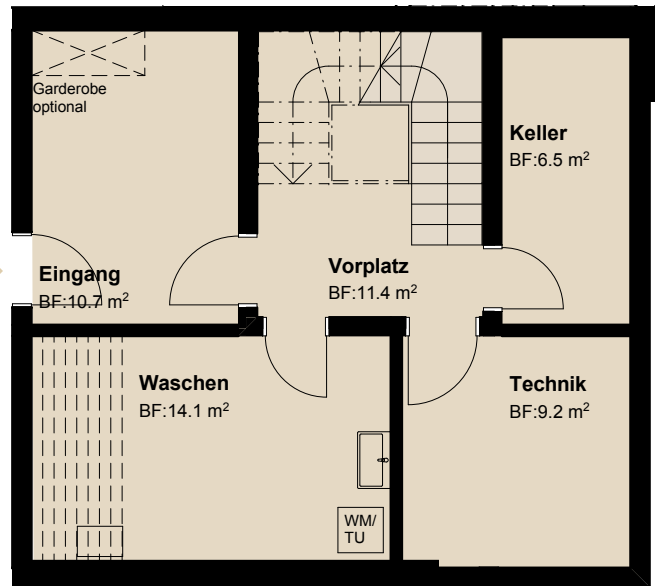


# Haus 8

## Untergeschoss

Zugang Garage ▶

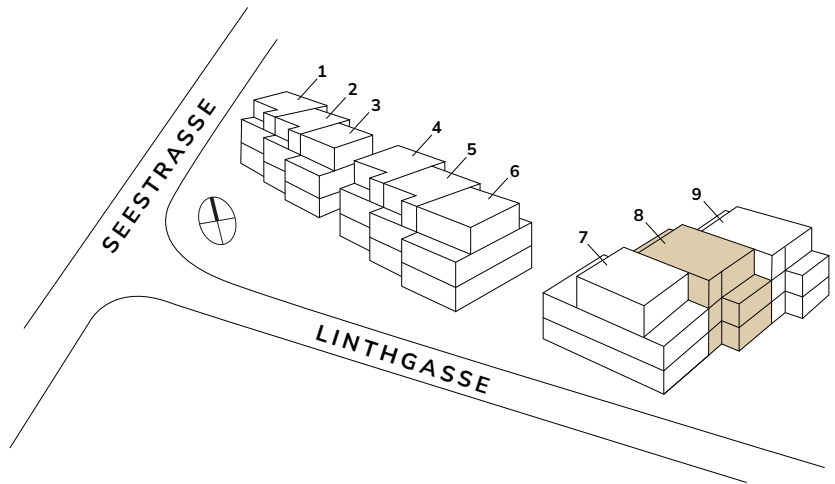
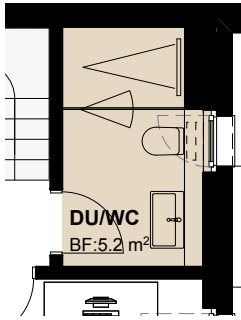


## Erdgeschoss

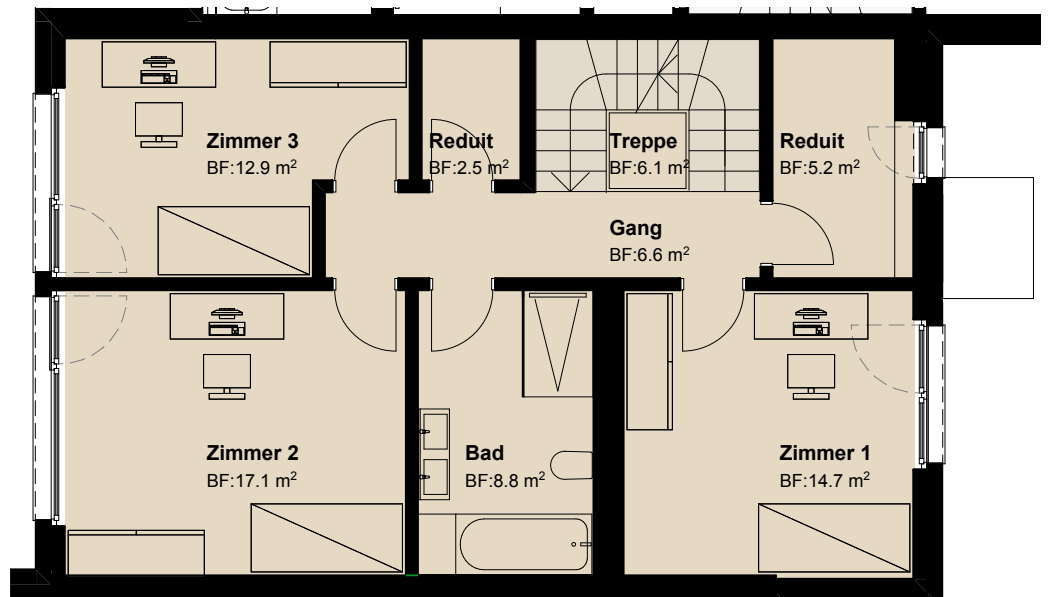


Zimmer	<b>5.5</b>
Bruttowohnfläche	<b>196 m<sup>2</sup></b>
Total Nutzfläche	<b>240 m<sup>2</sup></b>
Landanteil	<b>174 m<sup>2</sup></b>
Sitzplätze / Terrassen	<b>60 m<sup>2</sup></b>

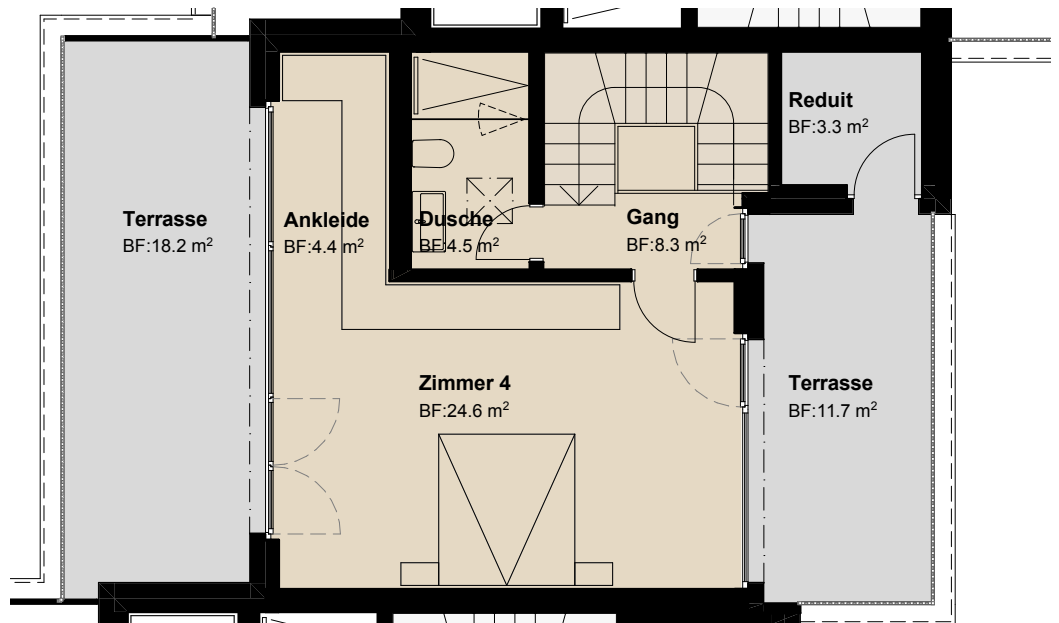
# Ausbau Variante OG



## Obergeschoss



## Attikageschoss



Mst. 1:100

0

1 m

5 m

