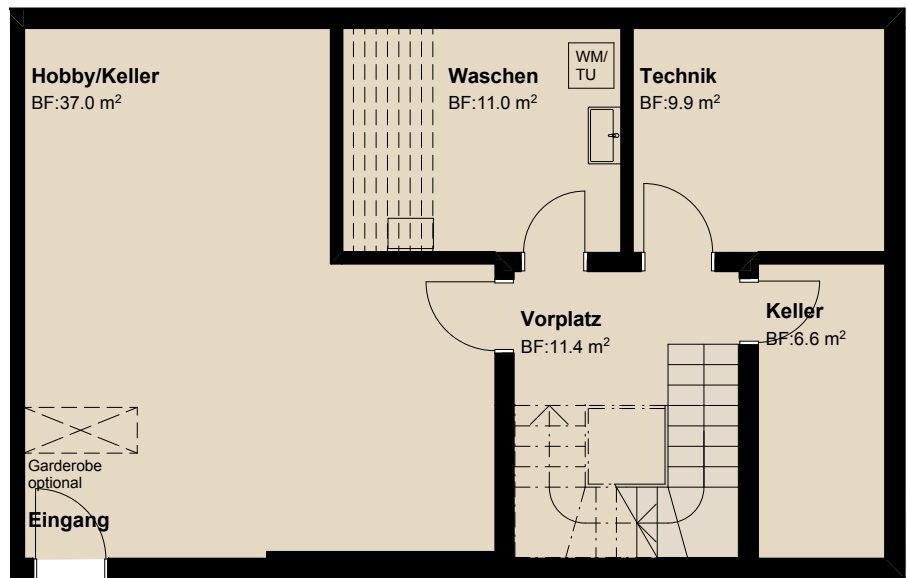


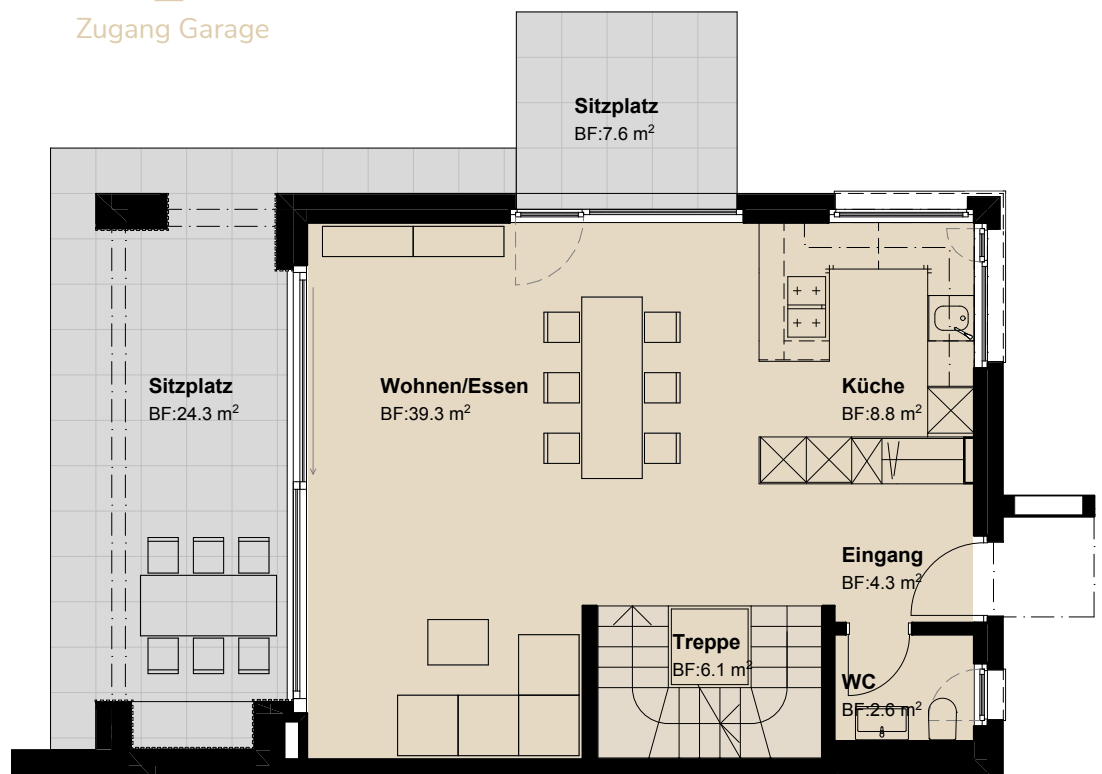
# Haus 9

## Untergeschoss



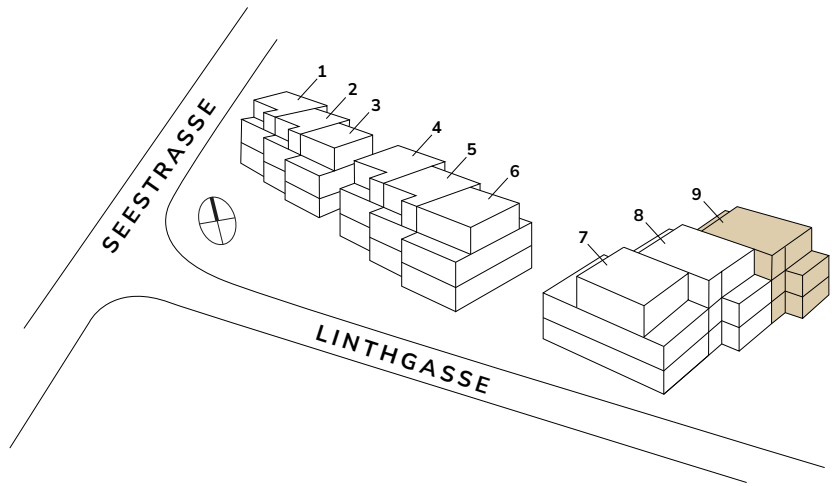
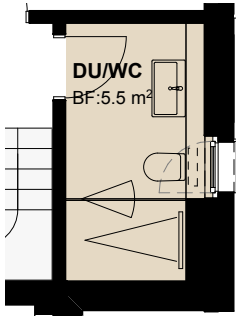
Zugang Garage

## Erdgeschoss

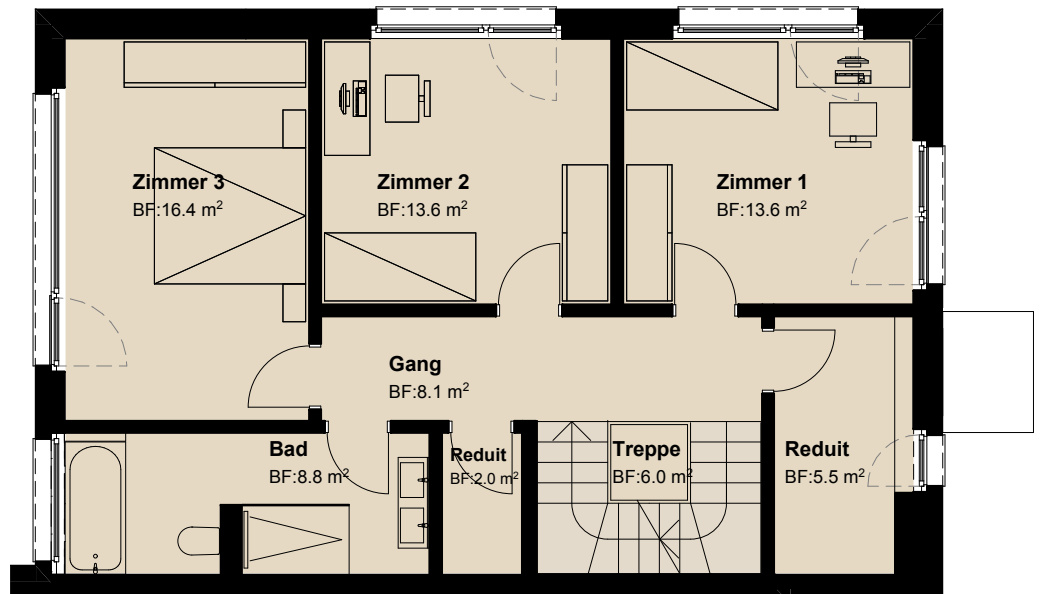


Zimmer	5.5
Bruttowohnfläche	197 m <sup>2</sup>
Total Nutzfläche	261 m <sup>2</sup>
Landanteil	289 m <sup>2</sup>
Sitzplätze / Terrassen	66 m <sup>2</sup>

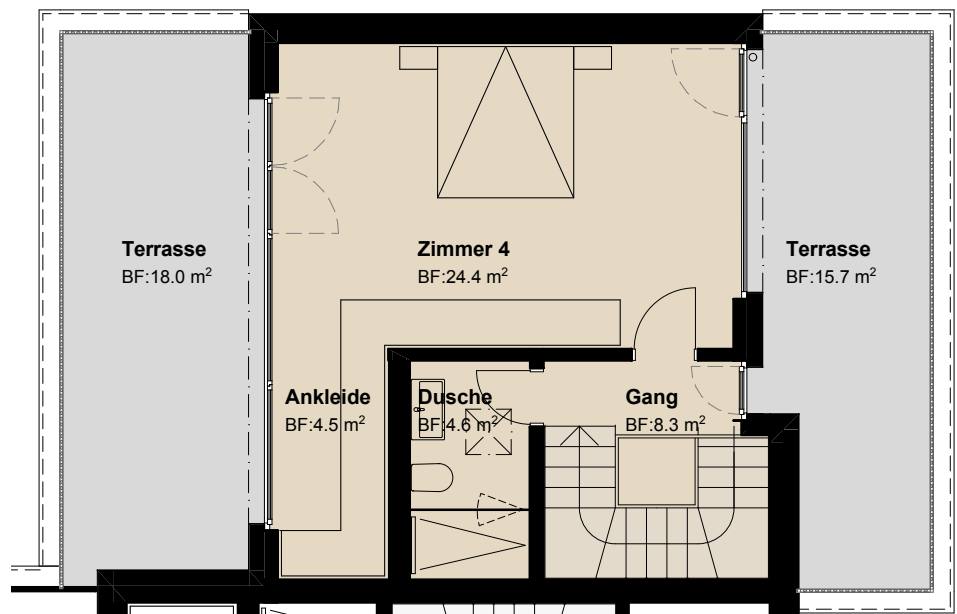
# Ausbau Variante OG



## Obergeschoss



## Attikageschoss



Mst. 1:100

0

1 m

5 m

